

Features

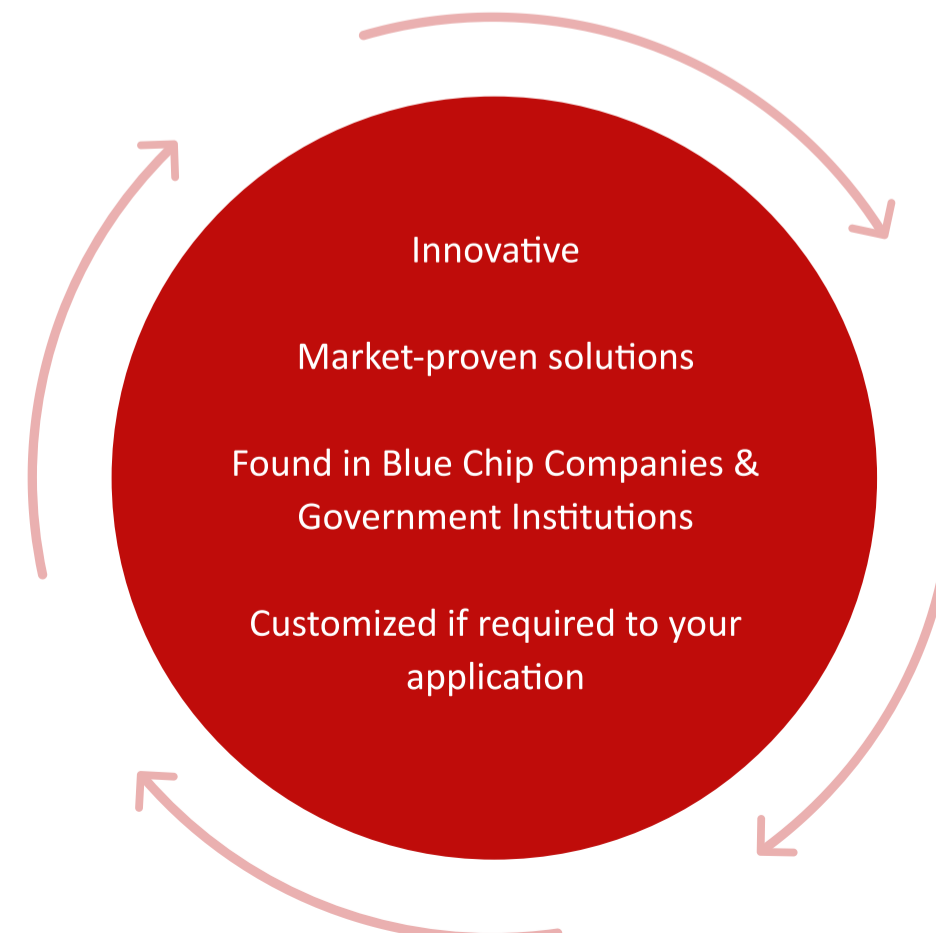
- Compatible with 200lb (120L), 400lb (200L), and 600lb (400L) dump buggies
- The tipping height is fixed at 51" (1295mm)
- Tipping angle = 30 degrees past the horizontal
- The machine is mobile as standard, on two fixed, and two swivel castor wheels
- 304 stainless steel
- Welded construction throughout
- Gel Battery (12v)
- Battery charger supply – 110v Single Phase
- Hydraulic power pack
- The hydraulic cylinder is fitted with a safety check valve such that even in the unlikely event of a hydraulic hose failure, the raised bin will not fall to the floor
- Chute fitted to the lift carriage as standard

Technical Specifications

- Controls/orientation – Hold to run push buttons / Right-hand side
- Stainless steel – AISI 304
- Lifting capacity – 660 lbs
- Tipping height = 51" (1295mm)
- Tipping reach – Customized to your application with a chute if required
- Tipping angle = 30 degrees past the horizontal
- Container suitability – Dump buggy 200, 400 + 600lb (or similar container)
- Base – Mobile base
- Single phase battery charging lead
- Control circuit – 24V AC
- Electrical rating – IP65
- Drive Type – Hydraulic power pack

Customized options available

- Guarding
- Fixed base
- We have 'off the shelf' machines, that can be further customized, or we can create a new solution for your specific needs.



1 2 3 4 5 6

A

B

C

D

E

F

G

H

A

B

C

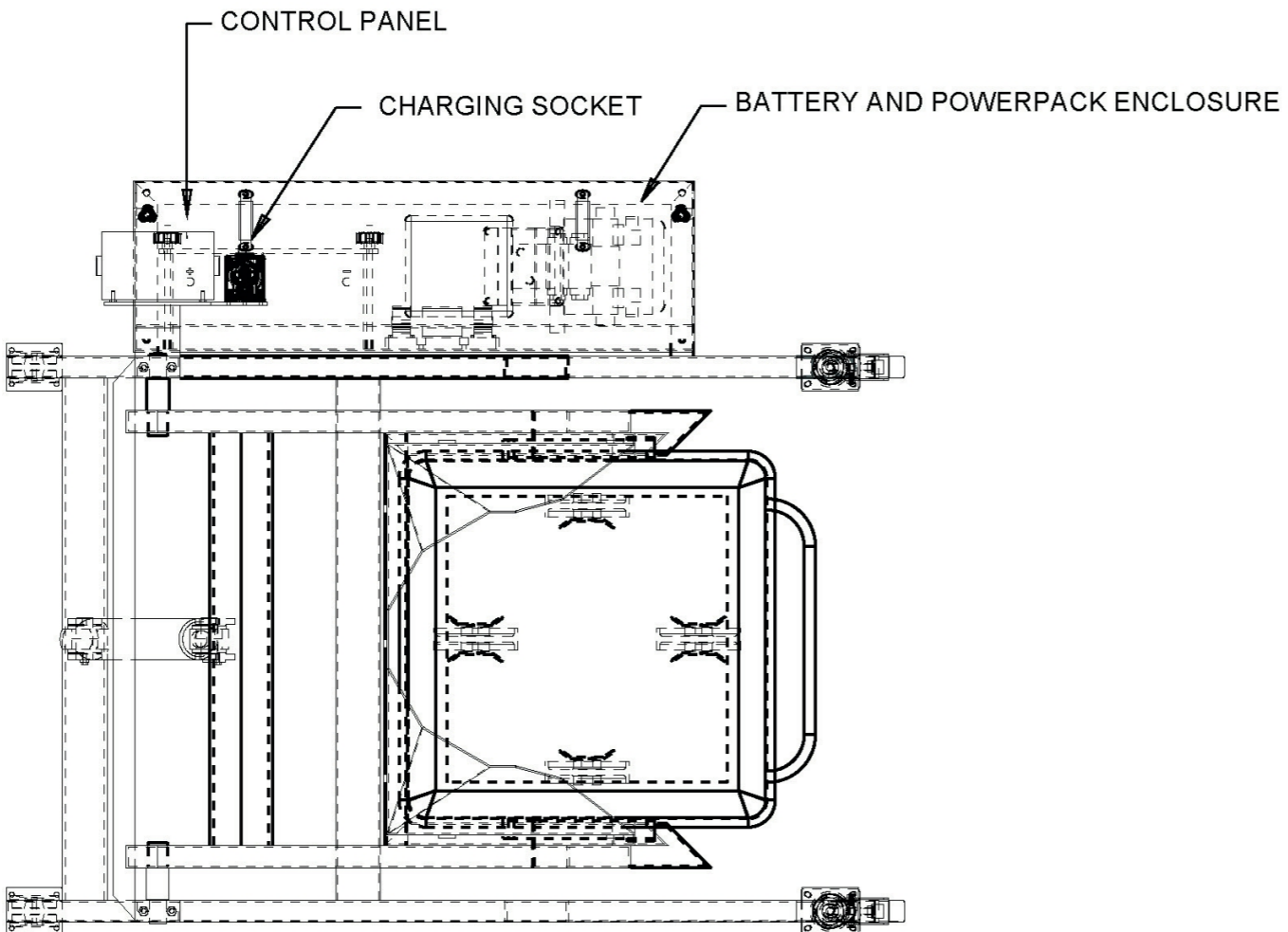
D

E

F

G

H

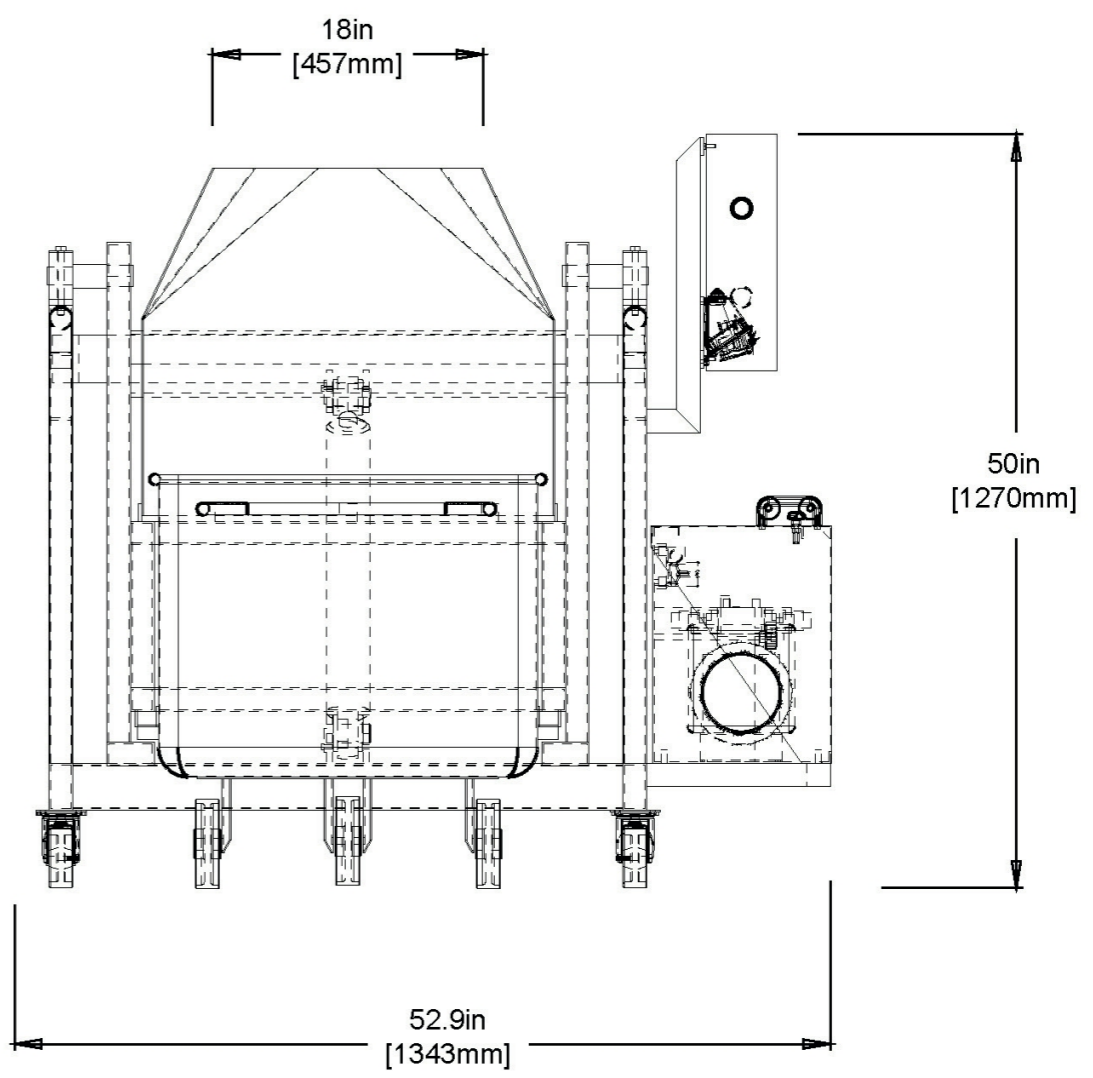
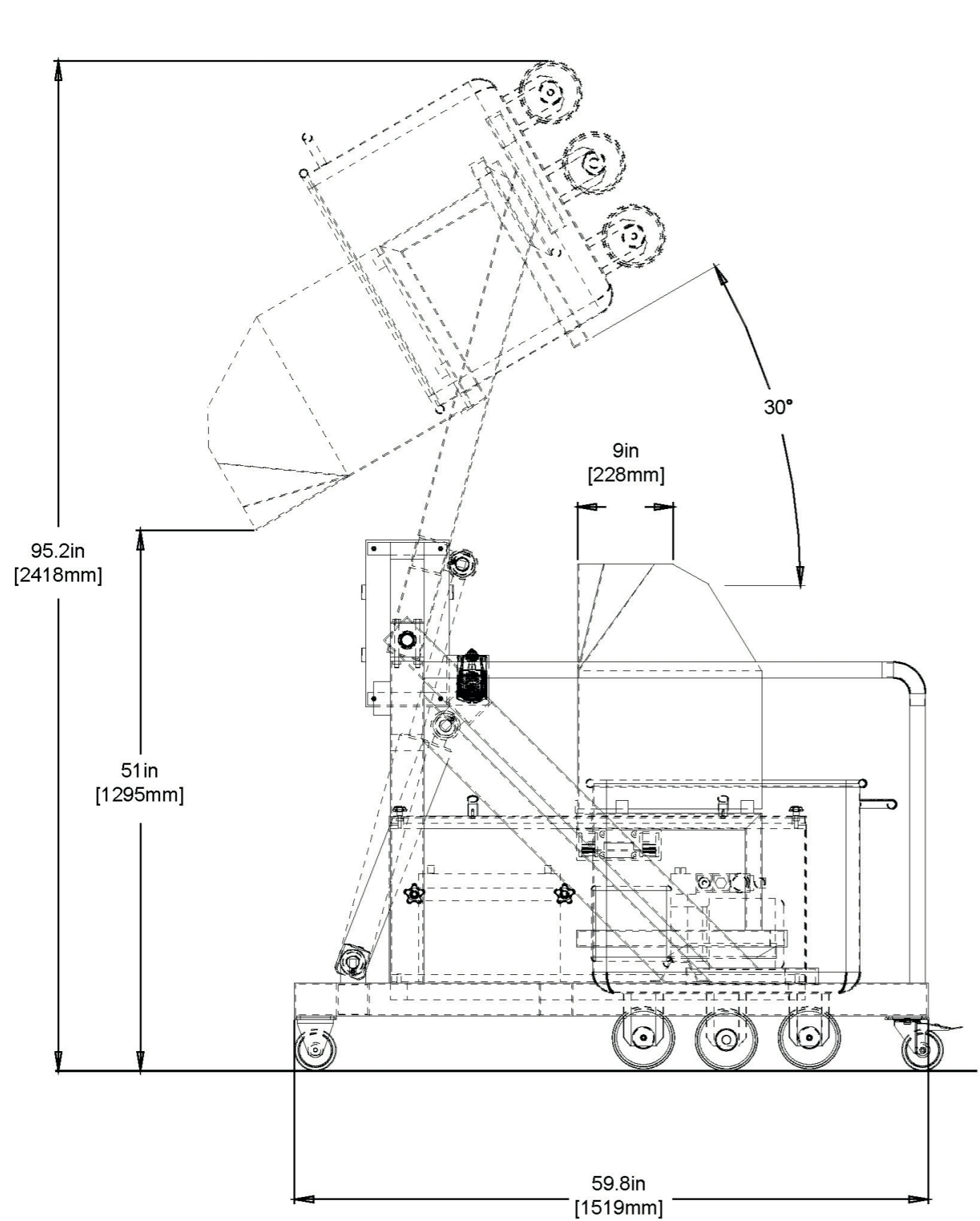
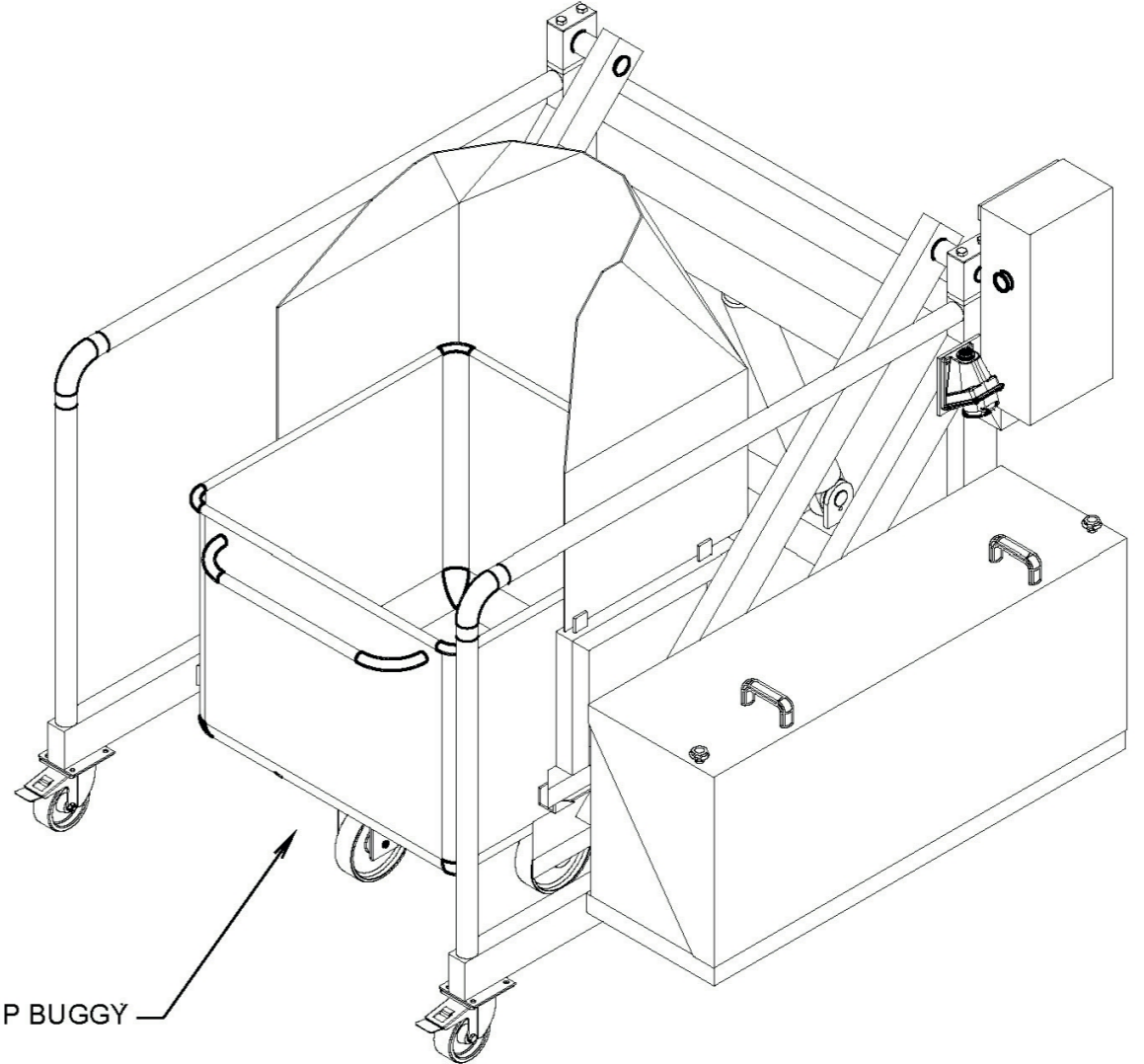


ISCA
Stainless Steel Fabrication



PROPRIETARY AND CONFIDENTIAL
 The information contained in this drawing is the sole property of ISCA.
 Any reproduction, in part or as a whole, without the written permission of ISCA is prohibited.

Unless otherwise specified:
 Dimensions are in inches [mm]
 Surface finish:
 Tolerances: imperial [metric(±15)]
 Linear: x.xx 0.2 (.xxx 0.01)
 Angular: xx' 010



product no:
**ISCA- Dump Buggy Lifter
 Tipper - Battery**

1 2 3 4 5 6

Wash



Store



Protect & Identify

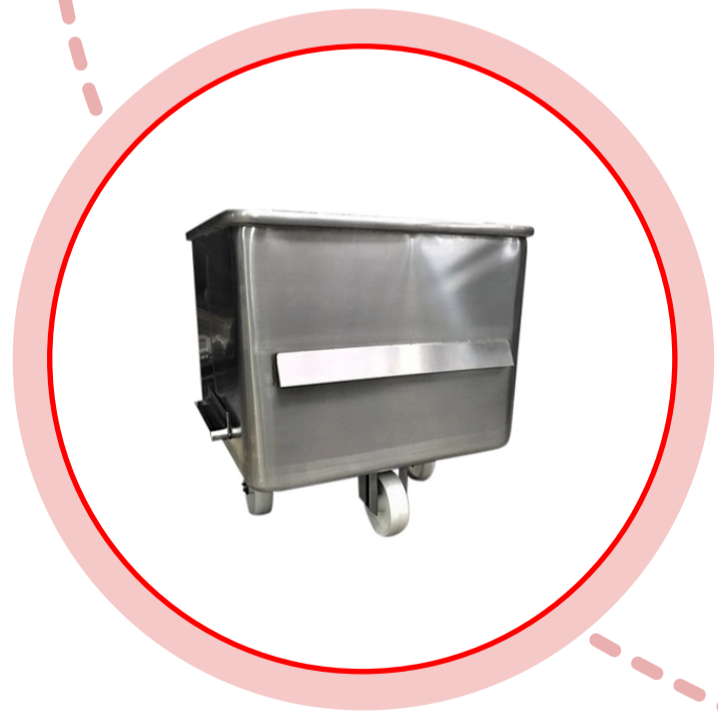


ISCA Dump Buggy Solutions

Weigh



Transfer



Lift + Tip



Mix



Transport

